

MIXOMAT
A

3 – 25 LT



Laboratory Blenders

for containers between 3 and 25 litres

Gericke

HOUSING

Design:

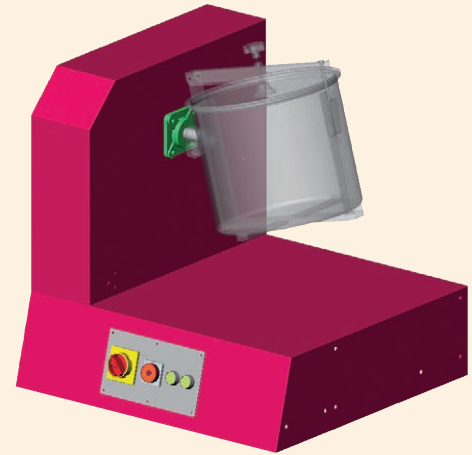
- ▶ standard housing in steel
- ▶ optionally in stainless steel St. 1.4301
- ▶ shaft with ball bearings, sealed bearing housings

Drive:

- ▶ geared motor 0.18 kW, 3x400V
- ▶ V-belt transmission

Surface finish:

- ▶ stove enamelled RAL 4002
- ▶ ground (with stainless steel option)

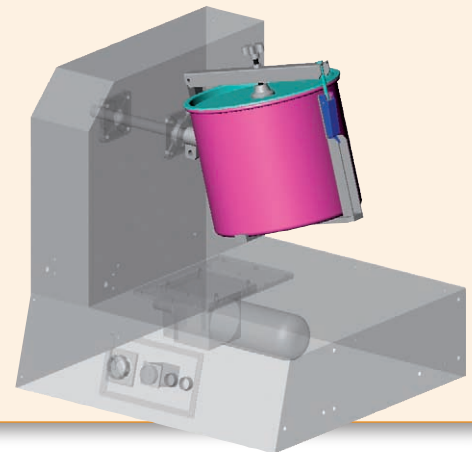


Type	Item number
MIXOMAT A Stove enamelled	M-A-0400
MIXOMAT A Stainless steel St.1.4301	M-A-0450

CONTAINER HOLDERS

Standard BV type container holders (Bügelverschluss) consisting of a welded and galvanised steel structure. The container is placed onto the holder base. The hose clamp is swung down on the holder and fixed with a quick acting closure. An adjustable stamp centred on the holder is used for holding down the container cover and for height adjustment. The container holders may also be adjusted to existing customer containers. The standard BV type holders can handle the following container sizes:

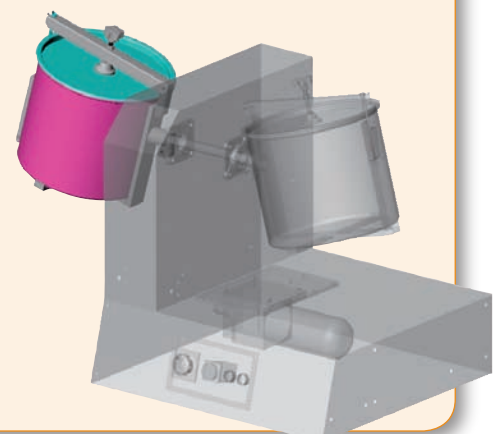
Capacity	d	H	Type	Item number
3 litres	200 mm	175 mm	BVr 3	M-A-0253
5 litres	180 mm	200 mm	BVr 5	M-A-0256
6 litres	200 mm	270 mm	BVr 6	M-A-0259
10 litres	250 mm	270 mm	BVr 10	M-A-0262
14 litres	275 mm	330 mm	BVr 14	M-A-0265
20 litres	315 mm	280 mm	BVr 20	M-A-0268
25 litres	315 mm	330 mm	BVr 25	M-A-0271



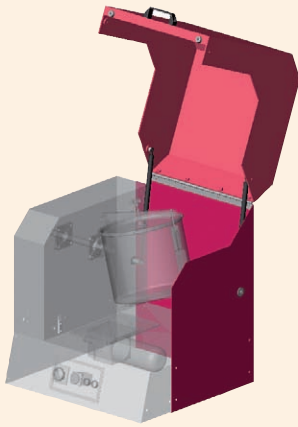
SECOND HOLDERS

The MIXOMAT A housing can be equipped with a second mirror-inverted BV type container holder which can handle the same containers sizes as mentioned above:

Capacity	d	H	Type	Item number
3 litres	200 mm	175 mm	BVI 3	M-A-0275
5 litres	180 mm	200 mm	BVI 5	M-A-0278
6 litres	200 mm	270 mm	BVI 6	M-A-0281
10 litres	250 mm	270 mm	BVI 10	M-A-0284
14 litres	275 mm	330 mm	BVI 14	M-A-0287
20 litres	315 mm	280 mm	BVI 20	M-A-0290
25 litres	315 mm	330 mm	BVI 25	M-A-0293



HOOD

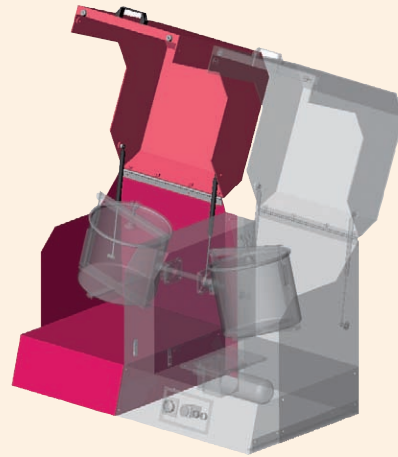


Design:

- ▶ stove enamelled steel base (RAL 4002)
- ▶ plexiglass hinged cover
- ▶ 2 gas springs for movement clamping and holder
- ▶ limit switch

Type	Item number
PLr	M-A-0320

HOOD FOR SECOND CONTAINER HOLDER



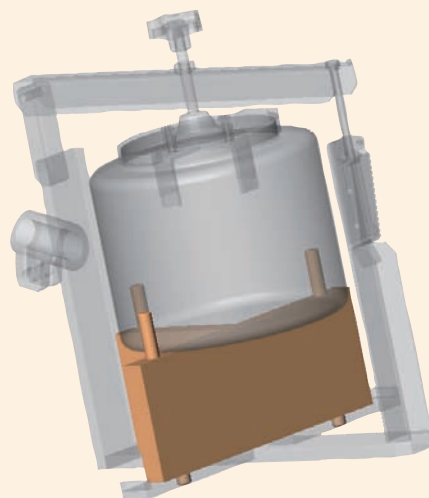
- ▶ same design as main hood, but mirror-inverted.

Type	Item number
PLI	M-A-0325

ADAPTERS FOR SMALLER CONTAINERS PLACED ON STANDARD HOLDERS

Containers with smaller diameters or heights can also be fitted on the BV type container holder by using these polypropylene adapters which may be easily clamped on.

Holder	Container	Type	Item number
BV6	5 litres	AD6/5	M-A-0510
BV6	3 litres	AD6/3	M-A-0514
BV10	6 litres	AD10/6	M-A-0518
BV10	5 litres	AD10/5	M-A-0522
BV10	3 litres	AD10/3	M-A-0528
BV14	10 litres	AD14/10	M-A-0532
BV14	6 litres	AD14/6	M-A-0536
BV14	5 litres	AD14/5	M-A-0540
BV14	3 litres	AD14/3	M-A-0544
BV20	10 litres	AD20/10	M-A-0548
BV20	6 litres	AD20/6	M-A-0552
BV20	5 litres	AD20/5	M-A-0556
BV20	3 litres	AD20/3	M-A-0560
BV25	20 litres	AD25/20	M-A-0564
BV25	14 litres	AD25/14	M-A-0568
BV25	10 litres	AD25/10	M-A-0572
BV25	6 litres	AD25/6	M-A-0576
BV25	5 litres	AD25/5	M-A-0580
BV25	3 litres	AD25/3	M-A-0584



- ▶ These adapters may be easily adapted to existing customer containers.

CONTAINERS

The following FUCHS standard containers are available:

Stainless-steel containers

- Design: ▶ stainless steel St.1.4301, bright as rolled finish
 Delivery: ▶ cover, tension ring (not necessary for blending),
 silicon seal, baffle (electro polished for faster
 and better blending)

Container sizes:

Capacity	d	H	Item number	Baffle
5 litres	180	200	M-A-0010	M-A-0051
10 litres	250	270	M-A-0015	M-A-0052
20 litres	315	280	M-A-0020	M-A-0053
25 litres	315	330	M-A-0025	M-A-0054

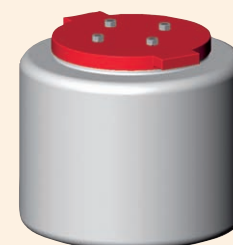
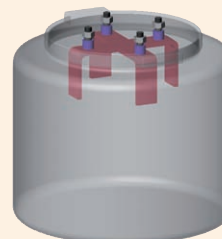
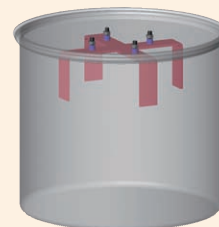
Plastic containers

- Design: ▶ material: ND-PE, opaque, white
 Delivery: ▶ sealing screw plug, stainless steel electro polished
 baffle St.1.4301 fixed on the cover

Container sizes:

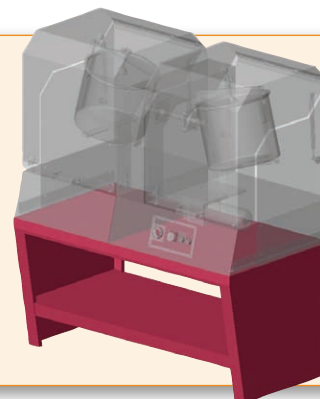
Capacity	d	H	Item number	Baffle
3 litres	200	175	M-A-0035	M-A-0051
6 litres	200	270	M-A-0037	M-A-0051
14 litres	275	330	M-A-0039	M-A-0052

Of course, existing customer containers may also be used.
 FUCHS will be pleased to supply the corresponding holders.



STAND

Type	Item number
Stand	M-0-1020



CONTROL UNIT AND OPTIONS

Standard control unit (supplied with all blender types)

Integrated control unit with main and process switch, analogue multifunction timer with 16 time ranges (1 sec to 500 hrs).
 Usual blending time between 2 to 10 minutes.

Options:

	Item number
Digital timer	M-0-1020
Adjustable speed (potentiometer with graduation from 1 to 10)	M-0-1030
Adjustable speed (with potentiometer and digital frequency display)	M-0-1040
"Left/Right" container positioning switch	M-0-1050